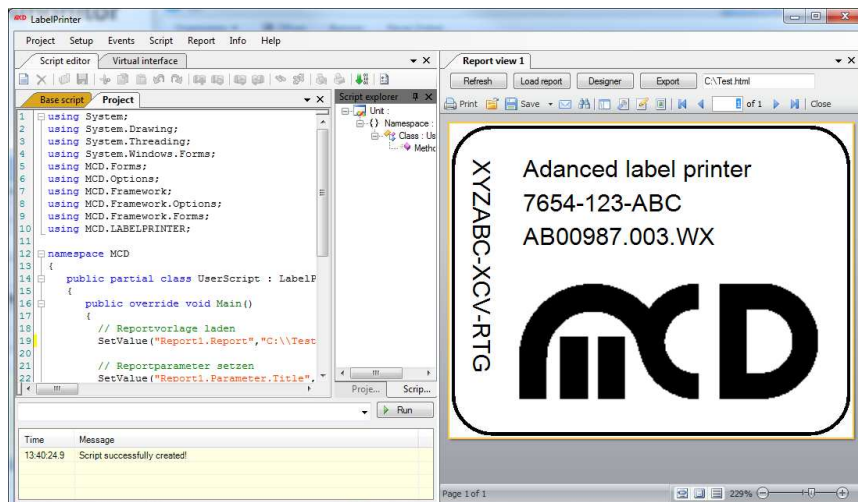


Manual

LabelPrinter tool monitor



Softline

Modline

Online

Boardline

Avidline

Pixline

Application



MCD Elektronik GmbH

Hoheneichstr. 52
75217 Birkenfeld/Germany
Tel. +49 (0) 72 31/7 84 05-0
Fax +49 (0) 72 31/7 84 05-10
info@mcd-elektronik.de
www.mcd-elektronik.de
Headquarters: Birkenfeld
General Manager: Bruno Hörter
Registry Court Mannheim
HRB 505692

Content

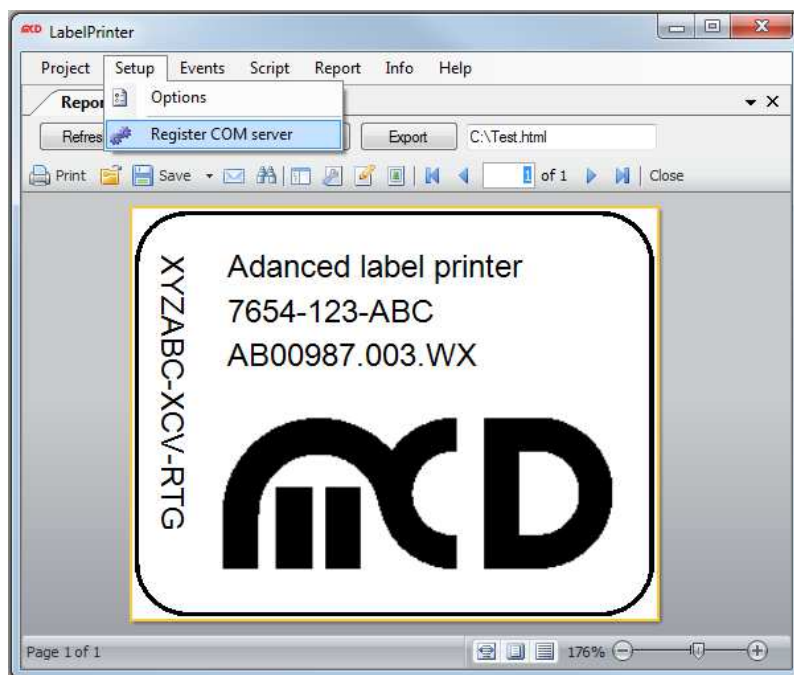
1. GENERAL INFORMATION	3
2. INSTALLATION	3
3. CONFIGURATION	4
4. REPORT VIEW	5
5. VIRTUAL INTERFACE.....	10

1. General Information

The LabelPrinter tool monitor is used as interface between the MCD TestManager CE and a Windows printer that should be used for printing labels, charts, and simple logs or similar.

2. Installation

For installation, copy the LabelPrinter tool monitor into a user-defined directory, start the program once with administrator rights, and register it as COM server. The tool monitor registers with the operating system.



Starting registration as COM server



Confirming registration as COM server

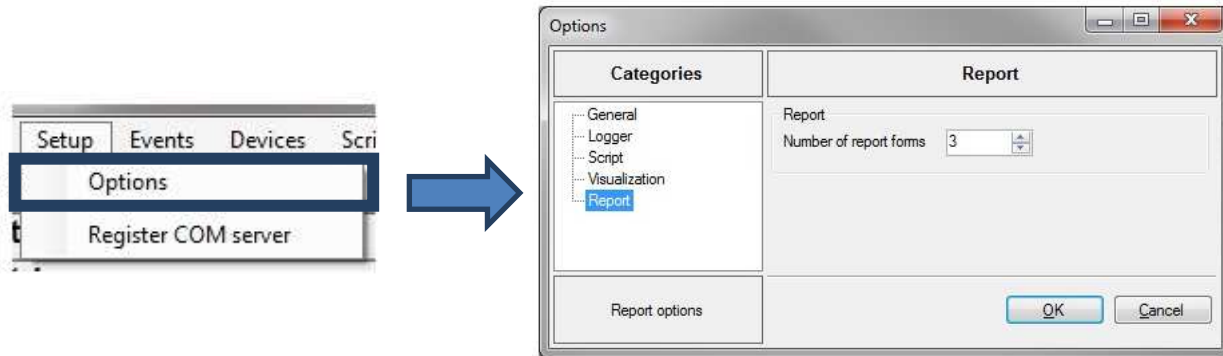
Name of the file executable:

- LabelPrinterMonitor.exe

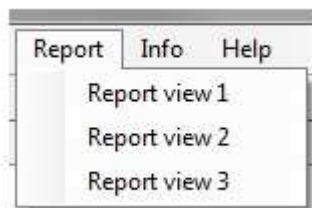
3. Configuration

Using the "Report" menu item under Setup, a user-defined report can be created. To activate this menu item, the number of "Report views" must be created in the Options of the tool monitor. These are independent forms, in which different reports can be designed and created via "FastReport".

To create a new report view, select the "Report" tab under Setup --> Options in the menu bar, and adjust the desired number of forms in the selection box.



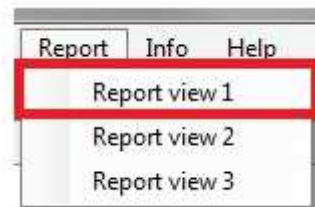
In the image below, three forms were created. After creation, the additional "Reports" option appears in the menu bar. Here, it can be selected between the created forms



4. Report view

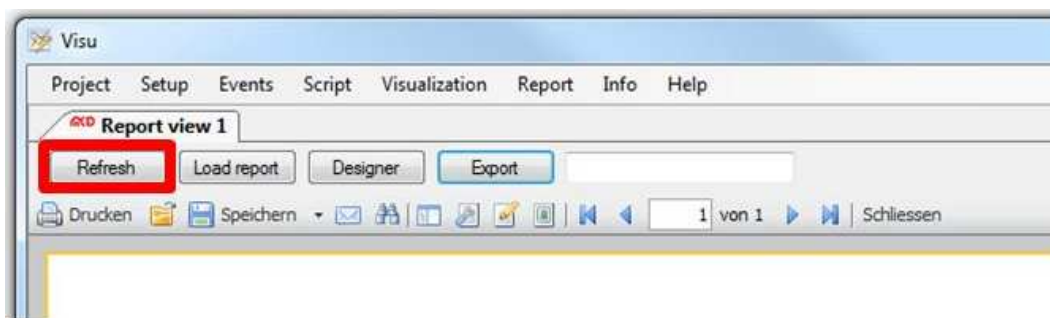
There are several functions on the report interface for loading, saving, printing, and editing reports. These functions are described in the following.

To open a report view, the desired form is selected under the "Report" menu item.

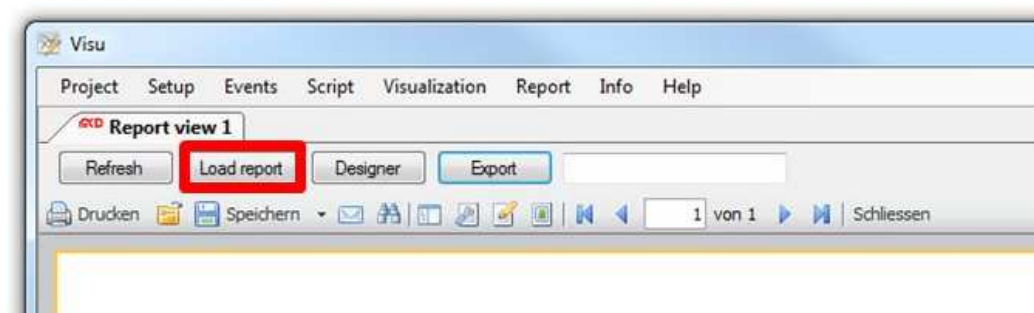


After the created report view was opened as shown above, an empty interface appears with the menu bar shown below. Four buttons are available at the top of the menu. Refresh Load report, Designer, and Export.

The report preview can be refreshed via the Refresh button. For example, if a time is displayed or a change was made in Designer, it can be refreshed here. For this purpose, Designer must be exited. Otherwise, an error message appears at the bottom of the screen.

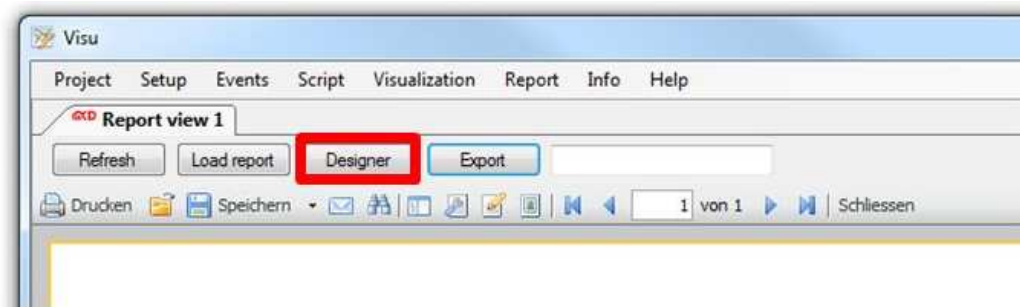


An already available report can be loaded via the Load report button. During this process, Designer must be exited. Otherwise, an error message appears at the bottom of the screen.

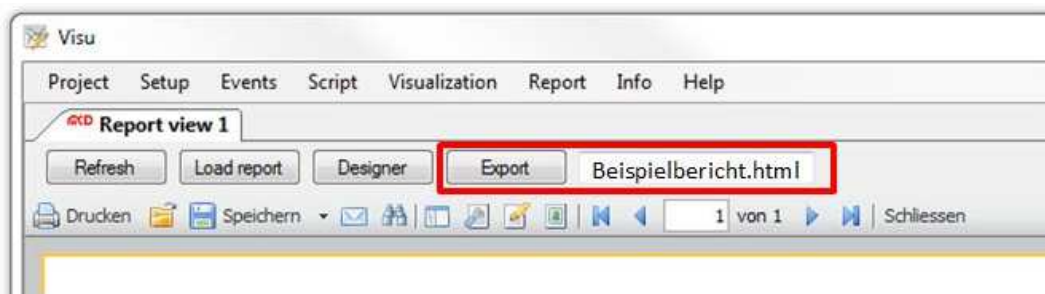


The FastReport Designer opens via the Designer button. Using Designer, layouts for new reports can be created as well as existing reports changed and/or edited. A detailed description of Designer and all available components can be found in the FastReport user's manual under:

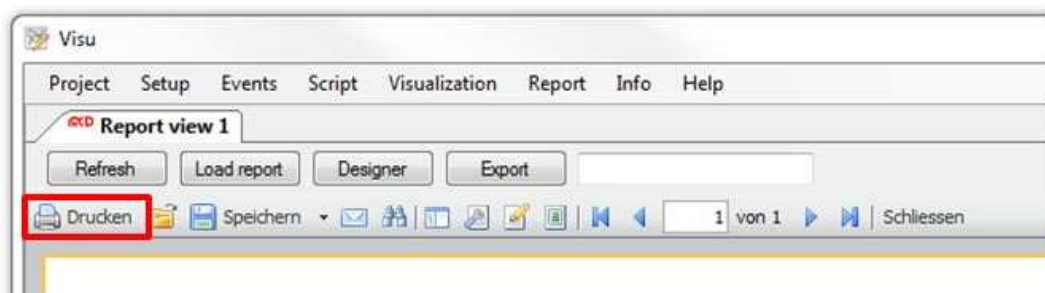
https://www.fast-report.com/public_download/FRNetUserManual-de.pdf



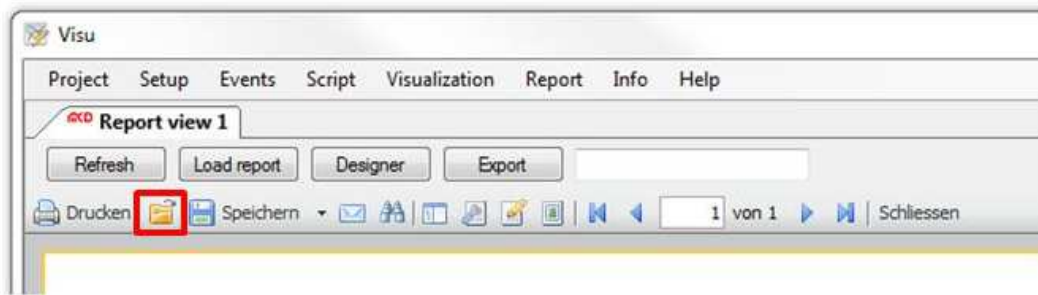
Using the Export function, the report can be directly exported (see example "Beispielbericht.html" below). If no specific path is indicated, but only the file name, the export is stored in the directory, where the tool monitor can be found.



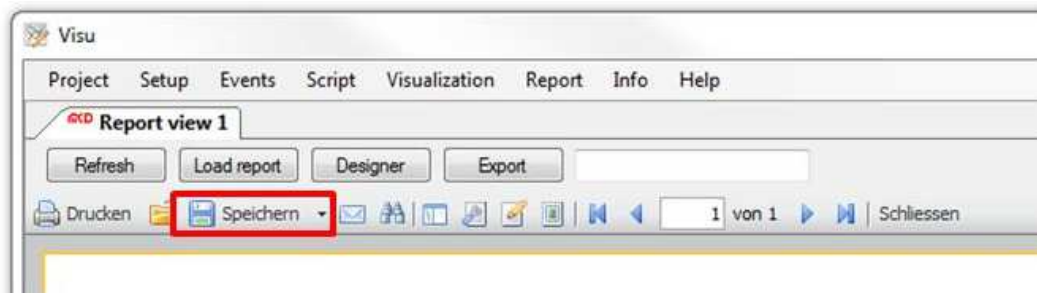
In addition to the four described buttons, several icons are available in the toolbar. The report can be printed via the Print icon as in any Windows application.



Already existing reports can be opened via the Open icon.



The created report can be saved in different format using the Save icon. The following formats are supported: PDF, ODS, ODT, Excel, XML, RTF, HTML, text, CSV, BMP, Jpeg, Tiff, and Gif.



Using the E-Mail button, the report can be directly sent from the tool monitor in the formats listed above.



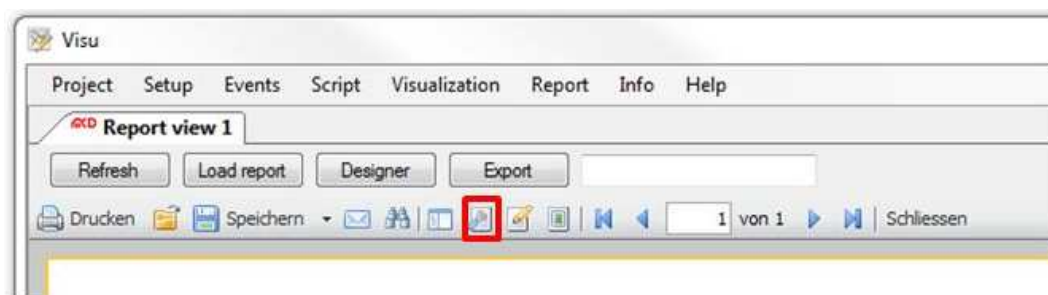
Using the Spy Glass icon, the report can be searched for keywords.



The report can be displayed in a frame using the Frame icon.

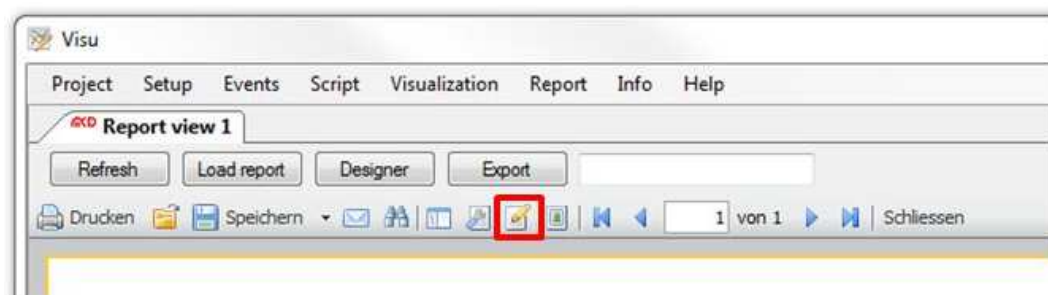


The paper format or the report dimensions can be adjusted using the Setup Page icon.

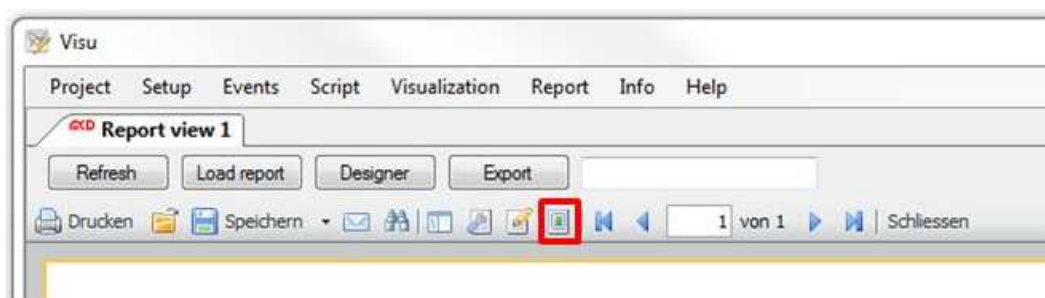


Designed can be directly accessed and the report edited via the Edit Report icon. A detailed description of Designer and all available components can be found in the FastReport user's manual under:

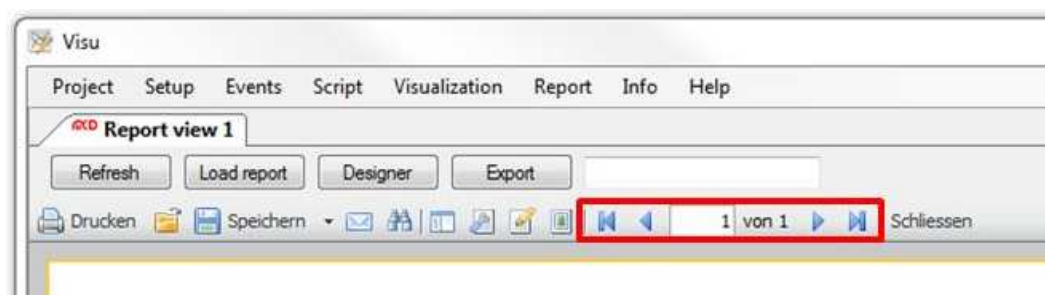
https://www.fast-report.com/public_download/FRNetUserManual-de.pdf



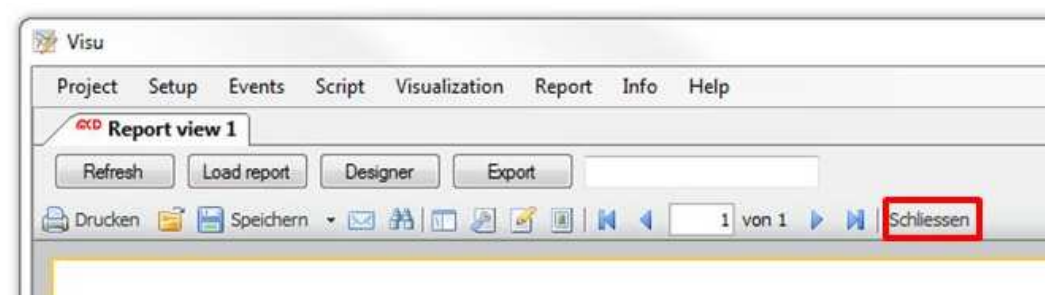
Using the Watermark icon, an image, or text can be added to the report as watermark.



This toolbar can be used to switch between all available pages of the report.



The Report view form can be exited using the Close button.



5. Virtual Interface

The LabelPrinter tool monitor is programmed via the virtual interface. The available commands can be called up in the Virtual Interface form.

The screenshot shows a software window titled "Virtual interface". It contains a large table with columns: Time, Command, Name, Value, Comment, and an empty column. Below this table is a tree view on the left labeled "Report 1" containing items like "Load report", "Parameter", "Refresh report", "Print report", and "Export". To the right of the tree is another table listing specific commands and their values.

Name	Value	Comment
Report 1.Report	C:\Test.frx	Load report
Report 1.Parameter.Title	Sample title	Set report parameter
Report 1.Refresh		Refresh report
Report 1.Print		Print report
Report 1.Export.PDF	C:\Test.pdf	Export report as PDF
Report 1.Export.HTML	C:\Test.html	Export report as HTML

At the bottom, there are input fields for "Name" (containing "Report 1.Report") and "Value" (containing "C:\Test.frx"), along with buttons for "Write", "Add", "Up", "Read", "Update", and "Down".