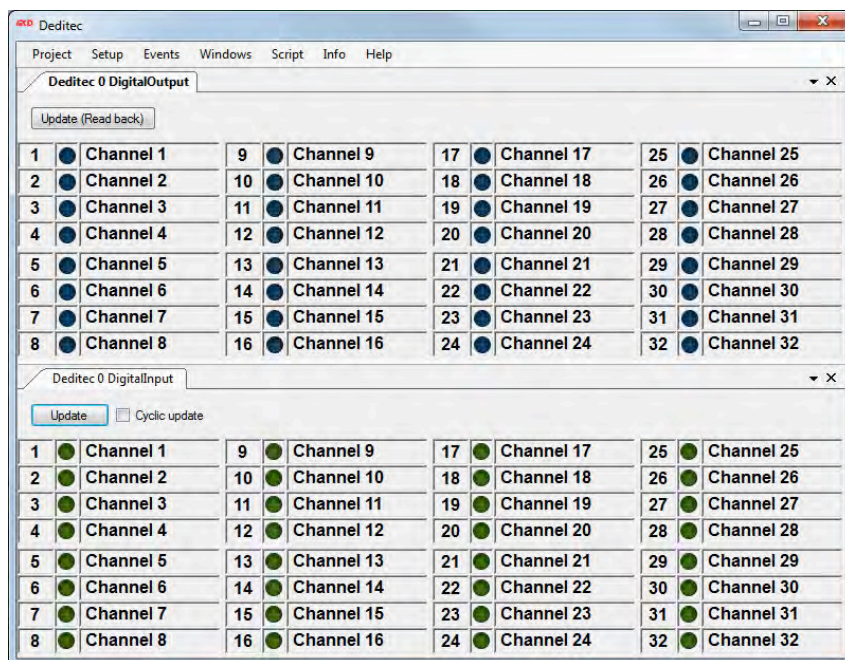


Product Description

Functions and features

DEDITEC Toolmonitor



Softline

Modline

Conline

Boardline

Avidline

Pixline

Application



MCD Elektronik GmbH

Hoheneichstr. 52

75217 Birkenfeld Germany

Phone +49 (0)7231 78.40.50

Fax +49 (0)7231 78.40.510

info@mcd-elektronik.de

www.mcd-elektronik.de

HQ : Birkenfeld Germany

Managing Director : Bruno Hörter

Court of Jurisdiction : Mannheim

Germany

HRB 505692

Content

1. GENERAL INFORMATION	3
2. PRODUCT FEATURES	4
2.1. SOFTWARE	4
2.2. PROJECT MANAGEMENT	4
2.2.1. <i>Save/ Save as</i>	4
2.2.2. <i>Load</i>	4
2.2.3. <i>Import window positions</i>	5
2.2.4. <i>Presets</i>	5
2.2.5. <i>Close all</i>	5
2.2.6. <i>Local</i>	5
2.2.7. <i>Remote</i>	5
2.2.8. <i>Hide</i>	5
2.2.9. <i>Exit</i>	5
2.3. EVENTS.....	6
2.3.1. <i>Logging</i>	6
2.3.2. <i>Trace</i>	6

1. General Information

The **DEDITEC Toolmonitor** provides the ability to control and visualize the serial DEDITEC modules for digital inputs and outputs. Initially, the following digital modules will be supported:

- RO-SER-O32-M32 (RS-232/RS-485 – digital input/output module with 16 inputs and 16 outputs)
- RO-SER-M64 (RS-232/RS-485 – digital output modules with 64 Opto Out outputs)
- RO-SER-R16 (RS-232/RS-485 – digital output module with 16 relais outputs)
- RO-USB-R16 (USB – digital output module with 16 relais outputs)

The Toolmonitor has been designed so that additional DEDITEC modules will be able to be integrated easily in the future.

DEDITEC Toolmonitor is based on the MCD Framework for tool monitors. The framework's basic features, such as logging, general settings and licensing, will also be described there.

Additional information about Toolmonitor's framework will be found in the General Help (or description) section of the MCD framework. In particular, this includes the description of the scripting engine, the virtual interface and the user-specific visualization.

The program interface can largely be designed with an open hand and customized to the users' requirements. Once created, configuration can be saved in project files and loaded as needed. All telegrams can be sent and received automatically with the help of an integrated scripting engine. Asynchronous processes can be stored in Toolmonitor. Using third-party software, Toolmonitor can be entirely remote controlled.

COM & DCOM or a .Net assembly may be used as the interface for this. Thereby, Toolmonitor can be integrated into a number of applications, including: Microsoft Visual Studio® (C#, C++ and Visual Basic), Microsoft Office® (such as Excel®), Open Office®, LabView® and MCD TestManager CE.

2. Product Features

2.1. Software

This Toolmonitor is able to read out various inputs and outputs, as well as to set the outputs.

The following prerequisites are needed:

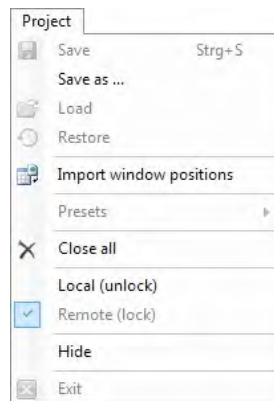
- Windows (Windows XP to Windows 8.1, 32- or 64- bit)
- .Net Framework version 3.0

Copying DeditecMonitor.exe to any directory on the target system will suffice to install DEDITEC ToolMonitor.

Alternatively, the installer provided (DEDITECInstall.msi) may be executed.

2.2. Project Management

The current settings and the Toolmonitor layout can be saved and loaded from the menu options under the Project menu (all windows can be positioned freely and adjusted according to the user's own needs).



The Project Menu

2.2.1. Save/ Save as...

All current settings can be saved in a project file by clicking the Save menu item. Even the current window positions will be stored in the file.

2.2.2. Load

Previously saved settings can be re-loaded by clicking the Load menu item. Even the original window positions will be recreated.

2.2.3. Import window positions

The Import Window Positions menu item allows the window positions to be imported from a saved setup file. All original settings will not be affected by this.

2.2.4. Presets

Predefined settings can be set using this menu item.

2.2.5. Close all

This menu item will close all open forms. Toolmonitor will continue to run.

2.2.6. Local

If Toolmonitor is remote controlled or the setup has been protected with a password, most user actions are protected against direct entry. Activating Local mode removes this protection and all operating controls will be accessible again. If the setup process included the entry of a password, it must be entered to release Toolmonitor.

2.2.7. Remote

Activating this menu item will return Toolmonitor to protected mode.

2.2.8. Hide

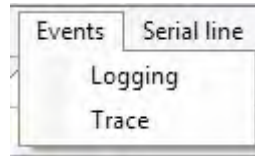
Activating this menu item will hide Toolmonitor, but keep it running. If it is not controlled remotely, ToolMonitor can be re-activated using an icon on the taskbar.

2.2.9. Exit

Activating this menu item will terminate Toolmonitor (the item will be disabled when ToolMonitor is controlled remotely).

2.3. Events

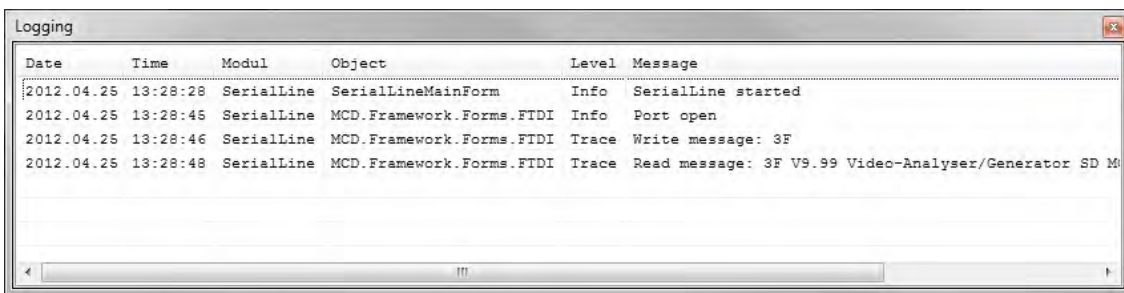
The logging and trace message displays can be accessed from this menu.



The Events Menu

2.3.1. Logging

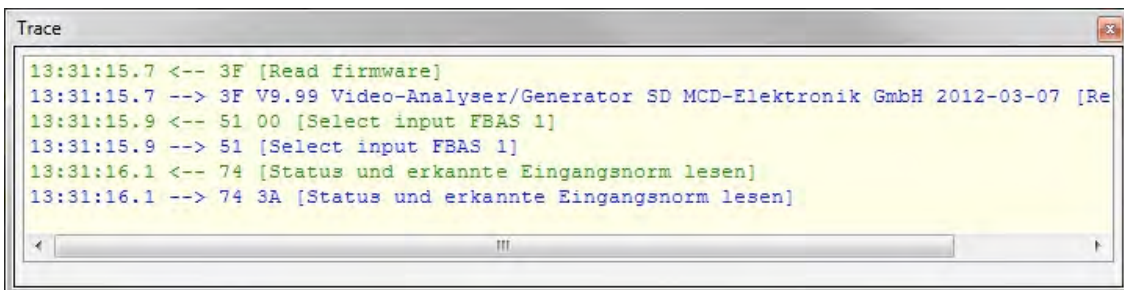
The logging messages for general events, warnings, errors and so forth will be displayed using this menu option.



Log Monitor

2.3.2. Trace

The trace messages (sent or received messages) will be displayed using this menu option.



Trace