



MCD COMET



```
<tr>
  <td class="error">Invalid base directory: </
</tr>
</table>
<?
)>
<?>
<!DOCTYPE html PUBLIC "-//W3C/

<html>
<head>
  <title>Image List</title>
  <meta http-equiv="Content-Type" content="text/html; charset=utf-8" />
  <link href="assets/imagelist.css" rel="stylesheet" type="text/css" />
  <script type="text/javascript" src="assets/dialog.js"></script>
  <script type="text/javascript">
    /*<![CDATA[*/

    if(window.top)
      I18N = window.top.I18N;

    function hideMessage()
    {
      var topDoc = window.top.document;
      var messages = topDoc.getElementById('messages');
      if(messages)
        messages.style.display = "none";
    }

    init = function()
    {
      hideMessage();
      var topDoc = window.top.document;

<?
//we need to refresh the drop directory list
//save the current dir, create all selection options
var selection = topDoc.getElementById('dirPath');
var currentDir = selection.options[selection.selectedIndex].value;

//high resolution
var selection = topDoc.getElementById('dirPath');
var currentDir = selection.options[selection.selectedIndex].value;

<? foreach($dirs as $relative=>$full) {
  selection.options[selection.length] = new Option("<?> TechSource
<?>");
}

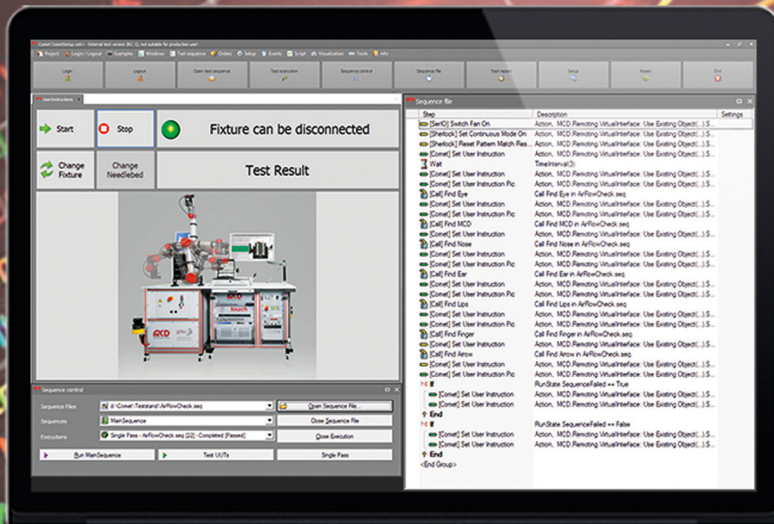
for($var i = 0; i < selection.length; i++)
{

```

The interface between
SOFTLINE and TestStand®

MCD COMET AND NI TESTSTAND®

A strong interface for forward-looking applications



MCD COMET connects MCD **software and hardware products** with National Instruments® **TestStand® sequencer**.

The user interfaces are **modern** and **flexible**, as well as simple and **intuitively controllable** by integration of all MCD Toolmonitors.

Besides the predefined interfaces for control and selection of TestStand® sequences, **user-specific control elements** can be applied.

RANGE OF FUNCTIONS

The MCD COMET is arbitrarily scalable through the use of toolmonitors

- ➡ Order and type management
- ➡ Support of various communication protocols (e.g. TCP/IP, UDP, RS232, LIN, CAN)
- ➡ Comfortable saving of measurement data into SQL databases
- ➡ Efficient control of PLC systems
- ➡ Automated process monitoring
- ➡ Comfortable and simple control of various hardware components of well-known manufacturers
- ➡ Imaging and image analysis
- ➡ Audio and video measurements as well as signal analysis
- ➡ Boundary Scan tests
- ➡ Control of various robot types



Order number:	156480
License fee MCD COMET:	990,00 €

Invalid base directory: <? echo \$manager->config['base_dir']; ?></td>

PUBLIC "-//W3C//DTD XHTML 1.0 Transitional//EN" "http://www.w3.org/TR/xhtml1/DTD/

ge List</title>
v="Content-Type" content="text/html; charset=utf-8" />
"assets/imagelist.css" rel="stylesheet" type="text/css" />
/javascript" src="assets/dialog.js"></script>
/javascript">

top)
N = window.top.I18N;

deMessage()

topDoc = window.top.document;
messages = topDoc.getElementById('messages');
messages)
messages.style.display = "none";

ion()

eMessage();
topDoc = window.top.document;

to refresh the drop directory list
current dir, delete all select options
new list, re-select the saved dir
(4)

rs = \$manager->getDir();

selection = topDoc.getElementById('dirPath');
currentDir = selection.options(selection.selectedIndex).text;

if(selection.length > 0)
selection.remove(0);

selection.options(selection.length) = new Option('') * "<? echo urlencode(\$_POST['dirPath'])";
foreach(\$dirs as \$relative->\$url) {

<?>



www.mcd-elektronik.com

var i = 0; i < selection.length; i++)

var thisDir = selection.options[i].text;

01011000111010101011000011100 10101010

01001101010100110 01101001010

MCD ELEKTRONIK GMBH

Hoheneichstr. 52

75217 Birkenfeld, Germany



shop.mcd-elektronik.com