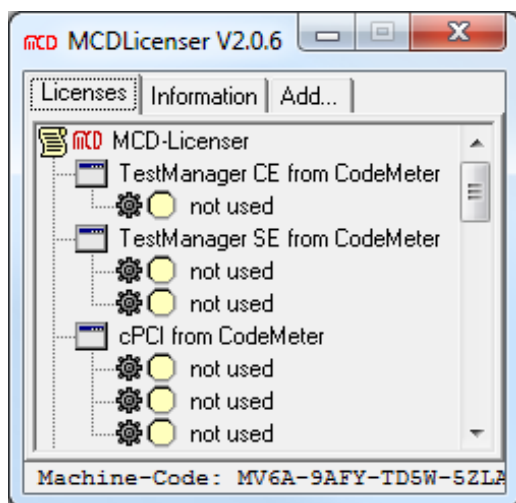


## Quick Guide

### MCD License Server

Licensing with MCD license files and USB Dongle



GET IN **touch**  
WITH SENSITIVE TESTING

Softline

Modline

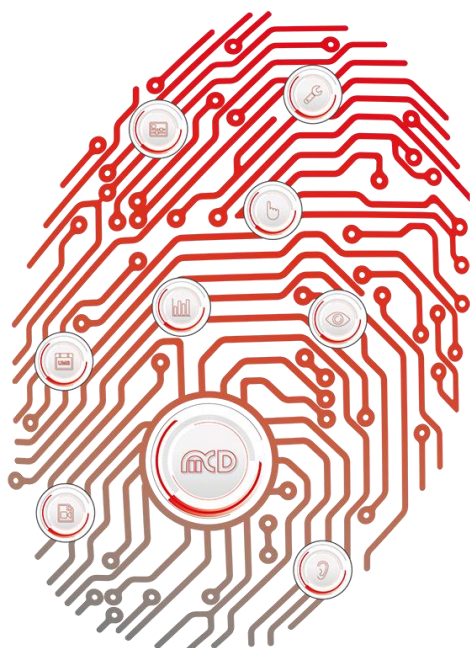
Conline

Boardline

Avidline

Pixline

Application



#### MCD Elektronik GmbH

Hoheneichstr. 52

75217 Birkenfeld

Tel. +49 (0) 72 31/78 405-0

Fax +49 (0) 72 31/78 405-10

info@mcd-elektronik.de

www.mcd-elektronik.com

HQ: Birkenfeld, Germany

Managing CEO: Bruno Hörter

Register Court Mannheim

HRB 505692

## Table of Contents

<b>1. GENERAL</b> .....	<b>3</b>
1.1. SHORT TIME LICENSE.....	3
1.2. SINGLE LICENSE WITHOUT MCD LICENSE SERVER .....	3
1.3. SINGLE OR MULTIPLE LICENSE WITH MCD LICENSE SERVER .....	3
<b>2. LICENSING WITH LICENSE FILES</b> .....	<b>4</b>
2.1. ORDER A LICENSE KEY.....	4
2.2. SINGLE LICENSE USAGE (WITH LICENSE SERVER) .....	5
2.3. MULTIPLE LICENSE USAGE (WITH LICENSE SERVER).....	5
2.3.1. <i>Download License Server</i> .....	5
2.3.2. <i>Installation of MCD License Server</i> .....	5
2.3.3. <i>Update MCD License Server</i> .....	6
2.3.4. <i>Installation License Key</i> .....	6
<b>3. LICENSING WITH USB DONGLE</b> .....	<b>7</b>
3.1. INSTALLATION .....	7
3.1.1. <i>Installation CodeMeter Runtime</i> .....	7
3.1.2. <i>Connecting USB Dongle and Installing Device Driver</i> .....	7
3.1.3. <i>Register MCD License Server</i> .....	7
3.2. LICENSE UPGRADE / ADD FURTHER LICENCES .....	8
<b>4. ERROR IMAGES</b> .....	<b>9</b>
4.1. ERROR ACCESSING OLE REGISTRY .....	9
4.1.1. <i>Error Image</i> .....	9
4.1.2. <i>Debugging</i> .....	9

## 1. General

The MCD program can be installed on any system without license and allows an unrestricted edition of data. But to access the hardware the program must be licensed. A program can obtain a license in three different ways:

- Short Time License (see chapter 1.1)
- Single License without MCD License Server (see chapter 1.2)
- Single or multiple License with MCD License Server (see chapter 1.3)

### 1.1. Short Time License

A short time license allows a hardware testing for about 8 hours. Activate a short time license via menu *Intern / License / Short time license*.

### 1.2. Single License without MCD License Server

For single licenses no server is required, only the license file (\*.MLK) with the "License Key" must be copied in the MCD program directory or windows<sup>®</sup> directory (C:\WINDOWS 1.e. C:\WINNT).

### 1.3. Single or Multiple License with MCD License Server

The MCD license server manages and allows the use of multiple licenses (license files or USB Dongle) on one system. You can find more information on this in Chapter 2.3 (Using Multiple License Files) and Chapter 3 (USB Dongle). The use of multiple licenses is only possible with a license server.

## 2. Licensing with License Files

### 2.1. Order a License Key

A license is linked or dependent on the desktop application for which the license is valid and also on the hardware of the computer on which the application is installed.

For the calculation of the key there are certain information / data necessary. For example, the active network card is used to generate the key (hardware code).

**Note:**

To prevent licensing problems, please connect the computer with the MCD application to be licensed to a local network, e.g. your company network. Preferably use the LAN interface. An Internet access is not required. The network connection is only necessary once to generate the license request file and can be disconnected afterwards.

The following steps are necessary to apply for the license key:

- Start the MCD application for which you want to request a license key
- Select the menu "Intern / License"

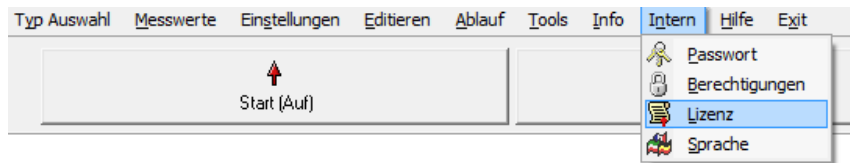


Figure 1: Choose tab "License"

- Select the tab "License Request"

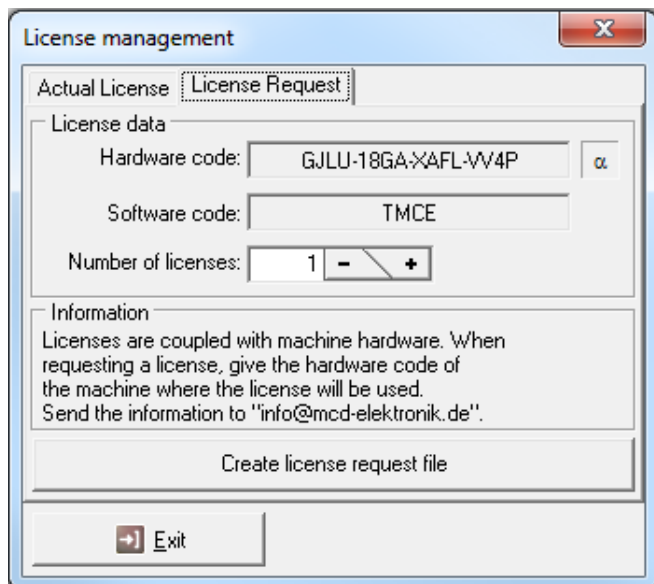


Figure 2: Request License

- Select the number of licenses required.
- A corresponding request file is generated via the button "Create request file". Now a save dialog opens in which you can save the generated file to a desired location. If no other option is available, please edit the file name.
- Afterwards please send the saved request file via e-mail to MCD Elektronik. You can find the corresponding e-mail address in the request window. The request file contains all necessary information so that the license key can be generated by MCD. A text editor (e.g. notepad or similar) can be used to check the information that has been sent.
- The license key can be calculated with the help of your sent request file, so that you receive an e-mail with the calculated license key as soon as possible. Please keep a backup of the license key in a safe place.

## 2.2. Single License Usage (with License Server)

Copy the received license key file (\*.MLK) into the MCD TestManager CE directory or into the Windows® directory. The program recognizes existing licenses at these two storage locations.

## 2.3. Multiple License Usage (with License Server)

The following steps are only important if you require the MCD License Server for multiple licenses.

### 2.3.1. Download License Server

The necessary software can be downloaded via:

<https://www.mcd-elektronik.com/fileadmin/assets/downloads/zip/testmanager/MCDLicenser.zip>

For the subsequent installation, it is necessary to unpack the downloaded ZIP package first with an appropriate program. The unpacked folder may contain the following files:

- MCDLicenser.exe
- CodeMeterRuntime.exe (only required for USB Dongle license model)

### 2.3.2. Installation of MCD License Server

- Create a new directory with the name <program files>\MCD\Licenses, where <program files> is the standard windows® directory. Normally it is called C:\Program Files, but this may vary depending on to the windows® version, language or installation type. You can also choose a different directory, but it should always be one on a local disk.
- Copy the downloaded files in the newly created folder.

- Start the executable program 'MCDLicenser.exe' as administrator.

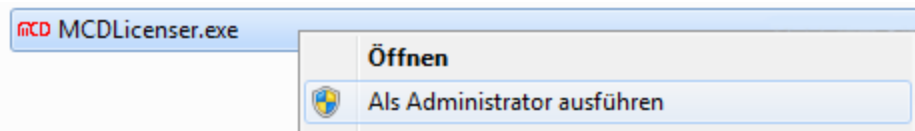


Figure 3: Open the MCDLicenser.exe

### 2.3.3. Update MCD License Server

If you receive a license server update, rename the old license server (as a backup) and copy the new one to the same location as the old license server. A new installation is not necessary. Avoid keeping multiple license server versions on the same system.

### 2.3.4. Installion License Key

In order for the acquired license key to be successfully recognized and used, it must be entered into the "Registry" of the computer. This registry entry is then used by the license server:

- Close all open test applications first
- Start the license server manually
- Navigate to the tab "Add"

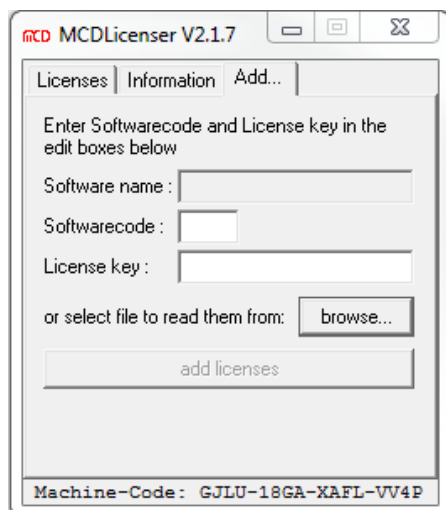


Figure 4: User Interface

- Press the button "browse..."
- Open the license key file received from MCD.
- Press the button "add license"
- Close the MCD License Server (e.g. via Alt – F4)

### 3. Licensing with USB Dongle

The software applications of the MCD Test Collection can also be licensed with USB Dongles. A link between a license and a computer is no longer necessary.

The protection of the MCD applications is guaranteed by the MCD license server. This has the advantage that already existing systems can be converted to a licensing with USB Dongles without software update of the TestManager CE / SE, cPCI, P475, etc. It is completely sufficient to replace or install the MCD license server.

#### 3.1. Installation

If you have not already downloaded the necessary MCD license server software, you will find further information and instructions in chapter 2.3.1 (Download License Server). After downloading the software package, the installation is done in three steps:

1. Installation of CodeMeter Runtime
2. Connecting USB Dongle and installing device driver
3. Registration of the MCD License Server

##### 3.1.1. Installation CodeMeter Runtime

Start *CodeMeterRuntime.exe* and follow the installation instructions of the installation window. All suggested default settings can be adopted.

##### 3.1.2. Connecting USB Dongle and Installing Device Driver

Connect the USB Dongle and wait until the automatic driver installation has been successfully completed.

##### 3.1.3. Register MCD License Server

To register the MCD License server *the MCDLicenser.exe* must be started once as an administrator. For Windows<sup>®</sup> XP it is enough to start with a user who has administrator rights. For Windows<sup>®</sup> Vista / 7 / 8 / 10, a user with administrator privileges is also required.

Additionally, note that the *MCDLicenser.exe* is also started as administrator.

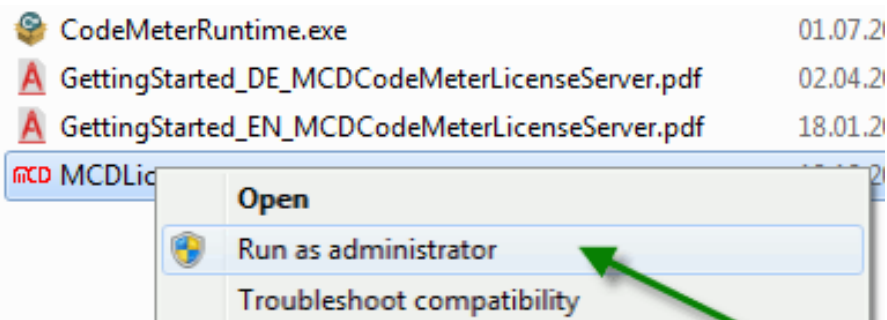


Figure 5: Start MCDlicenser.exe as an administrator

The installation is now complete. If a software component of the MCD TestCollection is started, the MCD License server is requested for a license. If the USB Dongle is not present, the license server and the software can not be started.

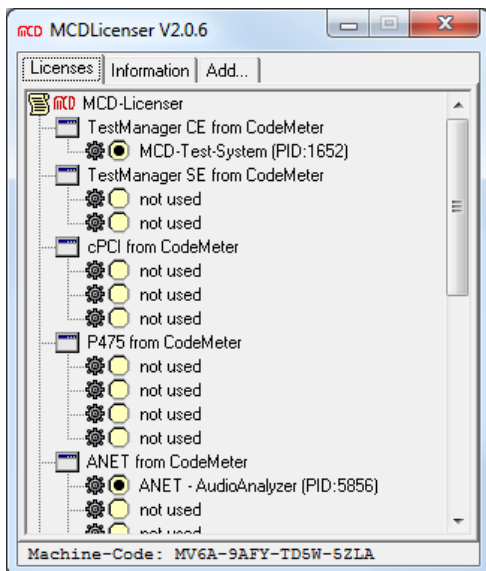


Figure 6: Overview MD Licensing

A mixed operation with the former on the hardware code-based licenses and the USB Dongle is also possible.

### 3.2. License Upgrade / Add Further Licences

After you have requested a Dongle upgrade with your desired licenses, we will send you a file with the extension *\*.WibuCmRaU*.

In the following, the import of the license file to the USB Dongle is described:

#### Note:

The update of licenses to a MCD USB Dongle can be performed from all computers with CodeMeter Control Center installed.

- Please make sure that the USB Dongle for the upgrade is connected to the computer.
- Start the CodeMeter Control Center if it is not already running (green icon in the notification field).
- Execute the upgrade file received from us (e.g. by double - clicking). The Control Center should now open automatically and ask you to confirm the update process. With confirmation the upgrade will be performed. After completion of the upgrade, a pop - up window informs you about the successful upgrade of the USB Dongle.
- If necessary, restart the MCD License server so that the new licenses are recognized.

After successfully upgrading the USB Dongle, the upgrade file is no longer required.



## 4. Error Images

Known installation errors and their solutions are listed below.

In advance make sure you followed the installation instructions carefully in the appropriate chapters.

### 4.1. Error Accessing OLE Registry

This error message may appear when starting the MCD TestManager. It is known that this error can only occur on Windows® 10 operating systems.

#### 4.1.1. Error Image

- Following error message appears when starting MCD TestManager:  
*“Error accessing OLE registry”*
- TestManager is not licensed.
- The MCD License server, which normally starts automatically together with the MCD TestManager, cannot be found in the *system tray*.

#### 4.1.2. Debugging

1. Copy the *MCDLicenser.exe* in the Windows® system directory (C:\Windows)
2. Perform the licenser once with administration privileges (right - hand click „Run as administrator“)
3. Then close the licenser manually
4. Start TestManager

Now the error message should not appear anymore and the MCD TestManager is licensed successfully.