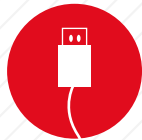
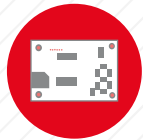


USB memory card
with Toolmonitor
and TestManager
Application

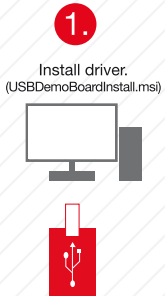


USB cable



Demo Board

USB DEMO BOARD Test Application consisting of



INSTALLATION

1.

Install driver.
(USBDemoBoardInstall.msi)

2.

Connect Demo
Board via USB.

3.

Start Toolmonitor.

⚠ DIP Switch 6 switches between local + remote mode.
To use software mode make sure that DIP Switch 6 is turned off.

